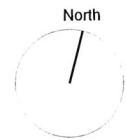

**Department of Infrastructure, Planning and Natural Resources**  
 Issued under the Environmental Planning and Assessment Act 1979  
 Approved Section 96 (1A) modification application  
 No. 44-3-2005 granted on the 11 MAY 2005  
 in respect to DA No. 252-10-2004, subject to conditions contained in the notice of determination.  
 Signed Michael Brown Date 11 MAY 2005  
 Sheet No. 1 of 13



SITE AREA : 798.6 m<sup>2</sup>  
 SITE COVER : 280.1 m<sup>2</sup>  
 : 35.1%

BED LICENCES : 34

URBAN ASSESSMENTS  
 JINDABYNE OFFICE  
 RECEIVED  
 21 MAR 2005  
 File no... ..Encl... ..

Issue	Status	Date
D	SECTION 96	02.03.05
C	CO-ORDINATION	31.01.05
B	ISSUE FOR COSTING	24.11.04
A	DA Submission	08.10.04

Consultants

Client:  
 ALPINE DEVELOPMENTS

  
 DARYL JACKSON ROBIN DYKE PTY LTD

64 Rose Street  
 Chippendale NSW 2008  
 Telephone (02) 9319 2955  
 Facsimile (02) 9698 1116  
 Email project@djrd.com.au

Architects

PROJECT

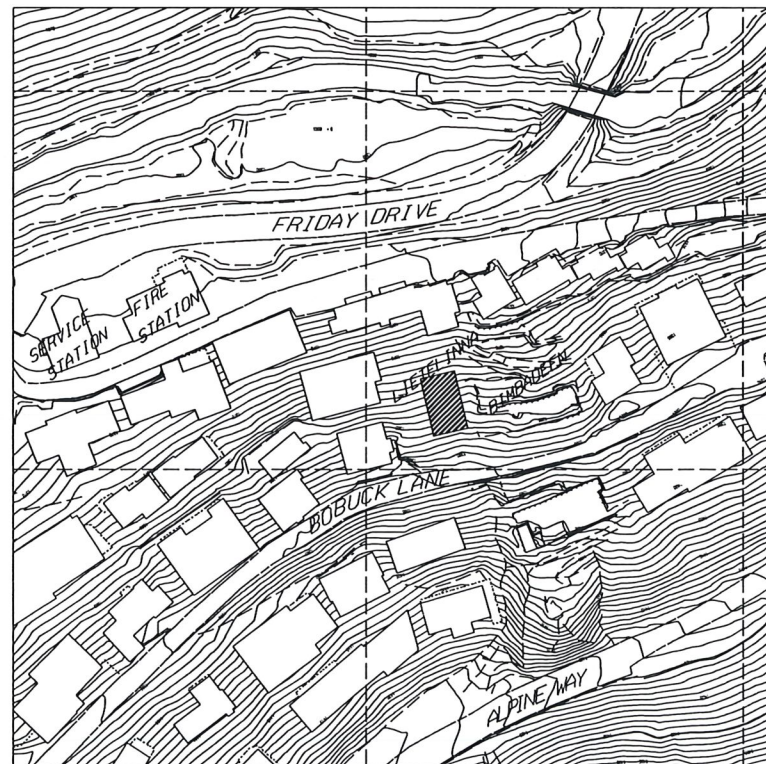
**LIETELINNA**  
 LOT 55 THREDBO

Scale @ A3 Date  
 1: 200 05.07.2004

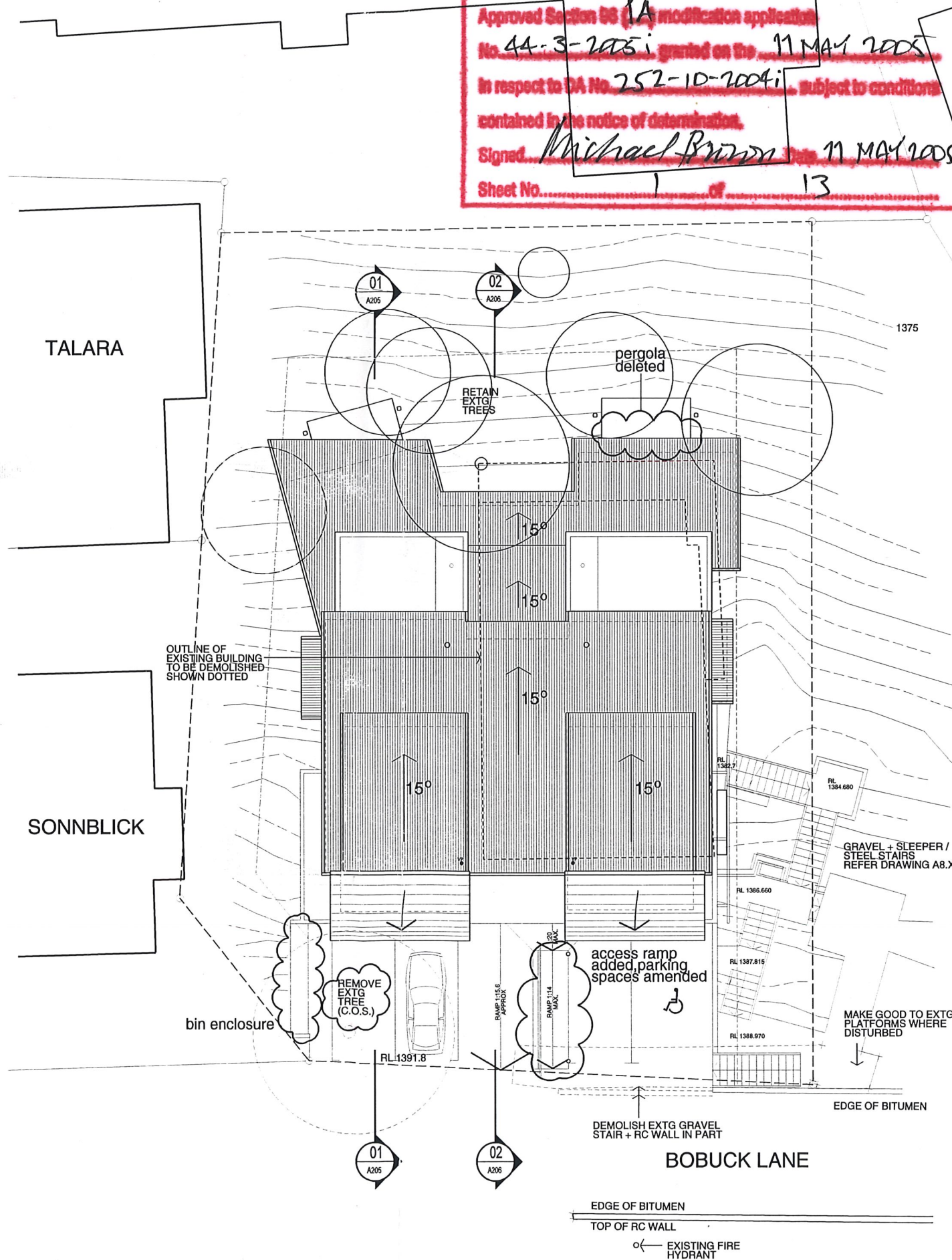
Description

**SITE PLAN**

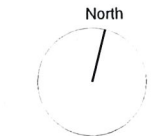
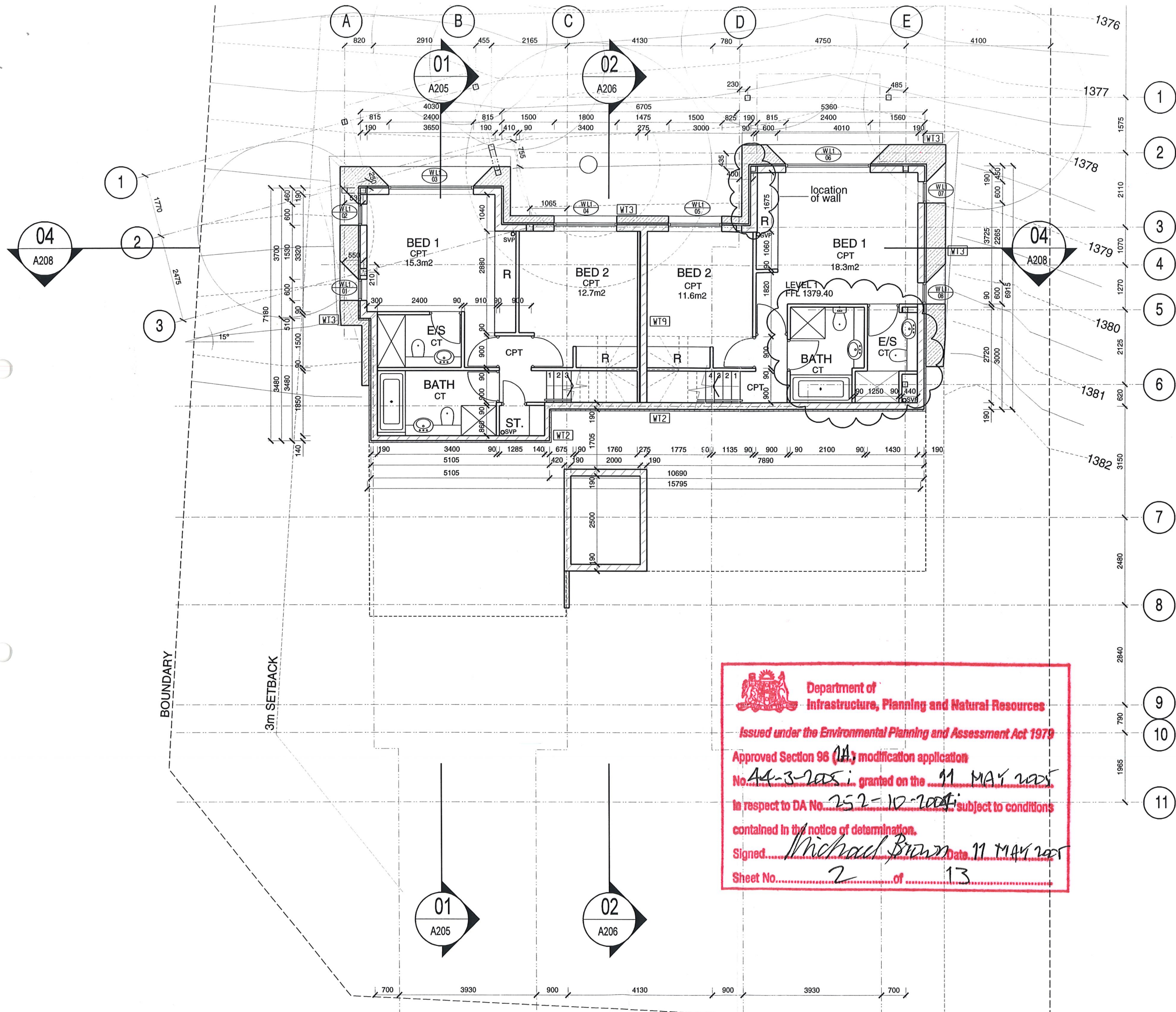
Job Number Dwg. No. Revision  
 03 460 A0.01 D



LOCATION PLAN 1:2000







- LEGEND**
- AR - ACRYLIC RENDER
  - COATING ON STYRENE
  - CFC - COMPOSITE FIBROUS CEMENT SHEET
  - CNC - CONCRETE - BRUSHED FINISH
  - CPT - CARPET
  - CT - CERAMIC TILE
  - CUP - COLOURED CONCRETE UNIT PAVER
  - FW - FLOOR WASTE
  - HMC - HORIZONTAL METAL CLADDING
  - HWU - HOT WATER UNIT
  - MR - METAL ROOFING - CORRUGATED COLORBOND
  - PP - PAINTED FIBROUS CEMENT PANEL
  - PT - TEXTURED PAINT FINISH TO CFC SHEET
  - R - ROBE
  - RSW - RANDOM STONE WALLING
  - RM - RENDERED MASONRY
  - SP - STONE PAVERS
  - TB - TIMBER BOARDING
  - TFW - TIMBER FRAMED WINDOW
  - TS - TIMBER SCREEN
  - ZC - ZINC CLADDING

Issue	Status	Date
F	SECTION 96	02.03.05
E	CO-ORDINATION	31.01.05
D	ISSUE FOR COSTING	24.11.04
C	CO-ORDINATION	17.11.04
B	CO-ORDINATION	26.10.04
A	DA Submission	08.10.04

Consultants

Client:  
ALPINE DEVELOPMENTS

DARYL JACKSON ROBIN DYKE PTY LTD

64 Rose Street  
Chippendale NSW 2008  
Telephone (02) 9319 2955  
Facsimile (02) 9698 1116  
Email project@djrd.com.au

Architects

PROJECT

**LIETELINNA**  
LOT 55 THREDBO

Scale @ A3 Date  
1: 100 05.07.2004

Description

**LEVEL 1 PLAN**

Job Number	Dwg. No.	Revision
03 460	A1.01	F

Department of Infrastructure, Planning and Natural Resources

Issued under the Environmental Planning and Assessment Act 1979

Approved Section 96 (1A) modification application

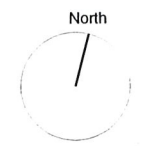
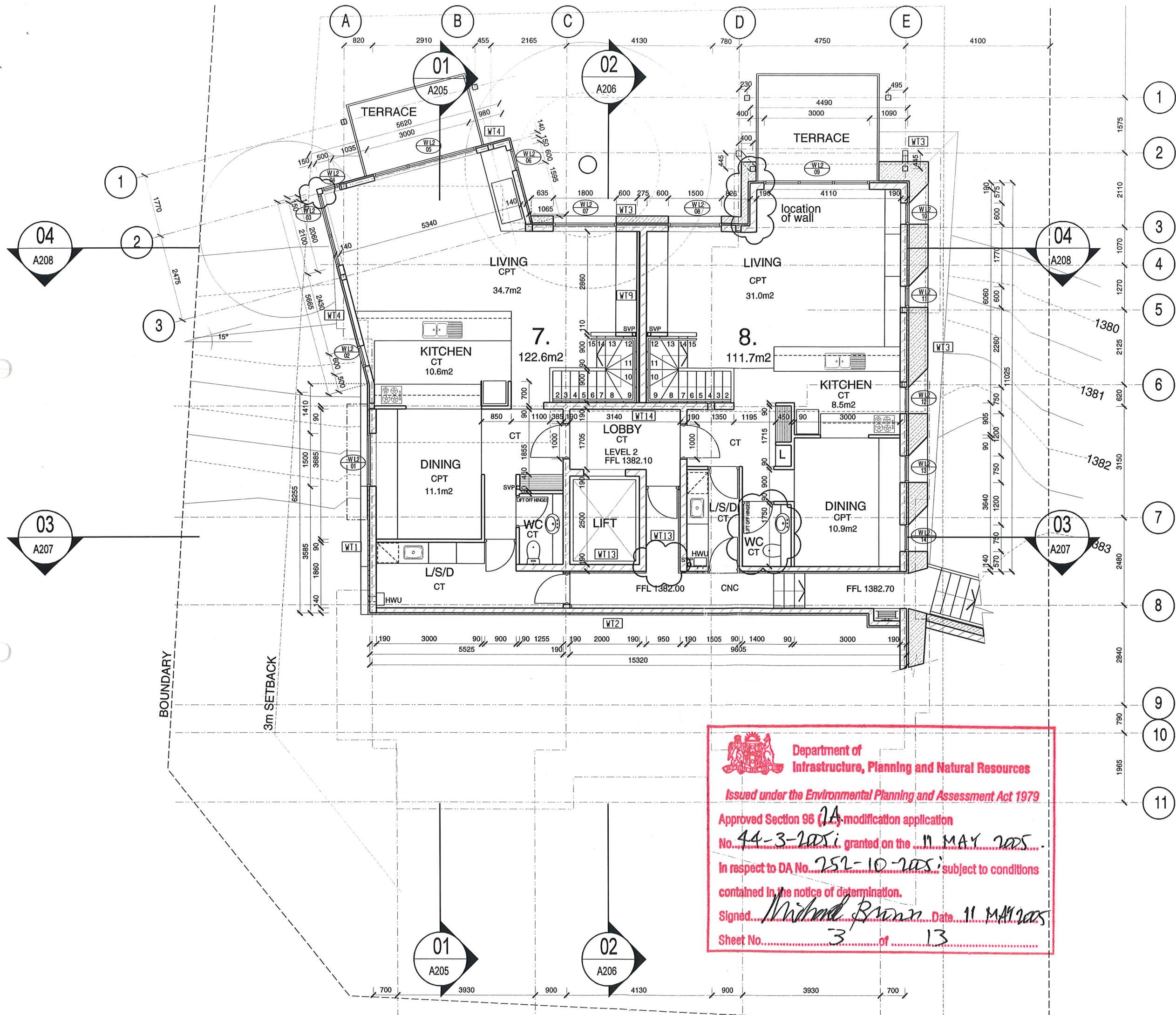
No. 44-3-205 granted on the 11 MAY 2005

In respect to DA No. 252-10-2004 subject to conditions contained in the notice of determination.

Signed Michael Brown Date 11 MAY 2005

Sheet No. 2 of 13





- LEGEND**
- AR - ACRYLIC RENDER COATING ON STYRENE
  - CFC - COMPOSITE FIBROUS CEMENT SHEET
  - CNC - CONCRETE - BRUSHED FINISH
  - CPT - CARPET
  - CT - CERAMIC TILE
  - CUP - COLOURED CONCRETE UNIT PAVER
  - FW - FLOOR WASTE
  - HMC - HORIZONTAL METAL CLADDING
  - HWU - HOT WATER UNIT
  - MR - METAL ROOFING - CORRUGATED COLORBOND
  - PP - PAINTED FIBROUS CEMENT PANEL
  - PT - TEXTURED PAINT FINISH TO CFC SHEET
  - R - ROBE
  - RSW - RANDOM STONE WALLING
  - RM - RENDERED MASONRY
  - SP - STONE PAVERS
  - TB - TIMBER BOARDING
  - TFW - TIMBER FRAMED WINDOW
  - TS - TIMBER SCREEN
  - ZC - ZINC CLADDING

Issue	Status	Date
F	SECTION 96	02.03.05
E	CO-ORDINATION	31.01.05
D	ISSUE FOR COSTING	24.11.04
C	CO-ORDINATION	17.11.04
B	CO-ORDINATION	26.10.04
A	DA Submission	08.10.04

Consultants

Client:  
ALPINE DEVELOPMENTS

DARYL JACKSON ROBIN DYKE PTY LTD  
64 Rose Street  
Chippendale NSW 2008  
Telephone (02) 9319 2955  
Facsimile (02) 9698 1116  
Email project@djrd.com.au  
Architects

PROJECT  
**LIETELINNA**  
LOT 55 THREDBO

Scale @ A3 Date  
1: 100 05.07.2004

Description  
**LEVEL 2 PLAN**

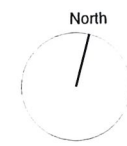
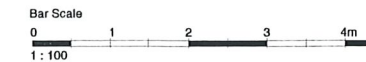
Job Number Dwg. No. Revision  
03 460 A1.02 F

Department of Infrastructure, Planning and Natural Resources

Issued under the Environmental Planning and Assessment Act 1979

Approved Section 96 (1A) modification application  
No. 44-3-2005 granted on the 11 MAY 2005.  
In respect to DA No. 252-10-2005; subject to conditions contained in the notice of determination.  
Signed: Michael Brown Date: 11 MAY 2005  
Sheet No. 3 of 13





- LEGEND**
- AR - ACRYLIC RENDER
  - COATING ON STYRENE
  - CFC - COMPOSITE FIBROUS CEMENT SHEET
  - CNC - CONCRETE - BRUSHED FINISH
  - CPT - CARPET
  - CT - CERAMIC TILE
  - CUP - COLOURED CONCRETE UNIT PAVER
  - FW - FLOOR WASTE
  - HMC - HORIZONTAL METAL CLADDING
  - HWU - HOT WATER UNIT
  - MR - METAL ROOFING - CORRUGATED COLORBOND
  - PP - PAINTED FIBROUS CEMENT PANEL
  - PT - TEXTURED PAINT FINISH TO CFC SHEET
  - R - ROBE
  - RSW - RANDOM STONE WALLING
  - RM - RENDERED MASONRY
  - SP - STONE PAVERS
  - TB - TIMBER BOARDING
  - TFW - TIMBER FRAMED WINDOW
  - TS - TIMBER SCREEN
  - ZC - ZINC CLADDING

Issue	Status	Date
F	SECTION 96	02.03.05
E	CO-ORDINATION	31.01.05
D	ISSUE FOR COSTING	24.11.04
C	CO-ORDINATION	17.11.04
B	CO-ORDINATION	26.10.04
A	DA Submission	08.10.04

Consultants

Client:  
ALPINE DEVELOPMENTS



DARYL JACKSON ROBIN DYKE PTY LTD  
64 Rose Street  
Chippendale NSW 2008  
Telephone (02) 9319 2955  
Facsimile (02) 9698 1116  
Email project@djrd.com.au  
Architects

PROJECT

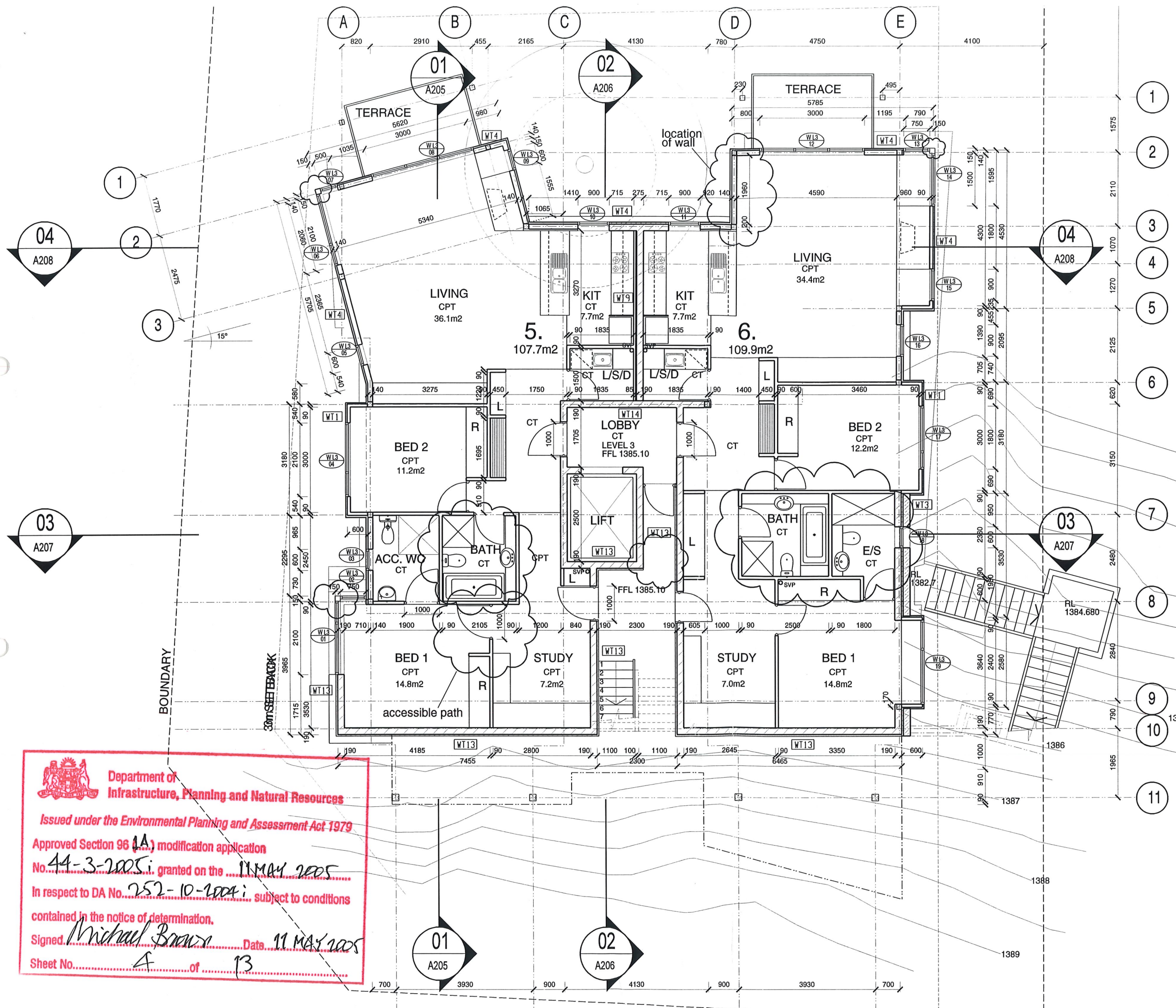
**LIETELINNA**  
LOT 55 THREDBO

Scale @ A3 Date  
1: 100 05.07.2004

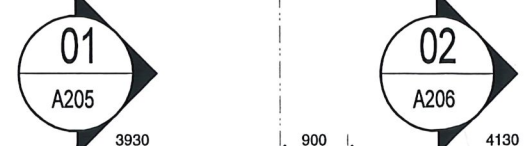
Description

**LEVEL 3 PLAN**

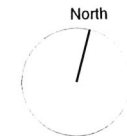
Job Number Dwg. No. Revision  
03 460 A1.03 F



**Department of Infrastructure, Planning and Natural Resources**  
Issued under the Environmental Planning and Assessment Act 1979  
Approved Section 96 (1A) modification application  
No. 44-3-2005; granted on the 11 MAY 2005  
In respect to DA No. 252-10-2004; subject to conditions contained in the notice of determination.  
Signed: Michael Brown Date: 11 MAY 2005  
Sheet No. 4 of 13







- LEGEND**
- AR - ACRYLIC RENDER
  - COATING ON STYRENE
  - CFC - COMPOSITE FIBROUS CEMENT SHEET
  - CNC - CONCRETE - BRUSHED FINISH
  - CPT - CARPET
  - CT - CERAMIC TILE
  - CUP - COLOURED CONCRETE UNIT PAVER
  - FW - FLOOR WASTE
  - HMC - HORIZONTAL METAL CLADDING
  - HWU - HOT WATER UNIT
  - MR - METAL ROOFING - CORRUGATED COLORBOND
  - PP - PAINTED FIBROUS CEMENT PANEL
  - PT - TEXTURED PAINT FINISH TO CFC SHEET
  - R - ROBE
  - RSW - RANDOM STONE WALLING
  - RM - RENDERED MASONRY
  - SP - STONE PAVERS
  - TB - TIMBER BOARDING
  - TFW - TIMBER FRAMED WINDOW
  - TS - TIMBER SCREEN
  - ZC - ZINC CLADDING

Issue	Status	Date
F	SECTION 96	02.03.05
E	CO-ORDINATION	31.01.05
D	ISSUE FOR COSTING	24.11.04
C	CO-ORDINATION	17.11.04
B	CO-ORDINATION	26.10.04
A	DA Submission	08.10.04

Consultants

Client:  
ALPINE DEVELOPMENTS

**DARYL JACKSON ROBIN DYKE PTY LTD**

64 Rose Street  
Chippendale NSW 2008  
Telephone (02) 9319 2955  
Facsimile (02) 9698 1116  
Email project@djrd.com.au  
Architects

PROJECT

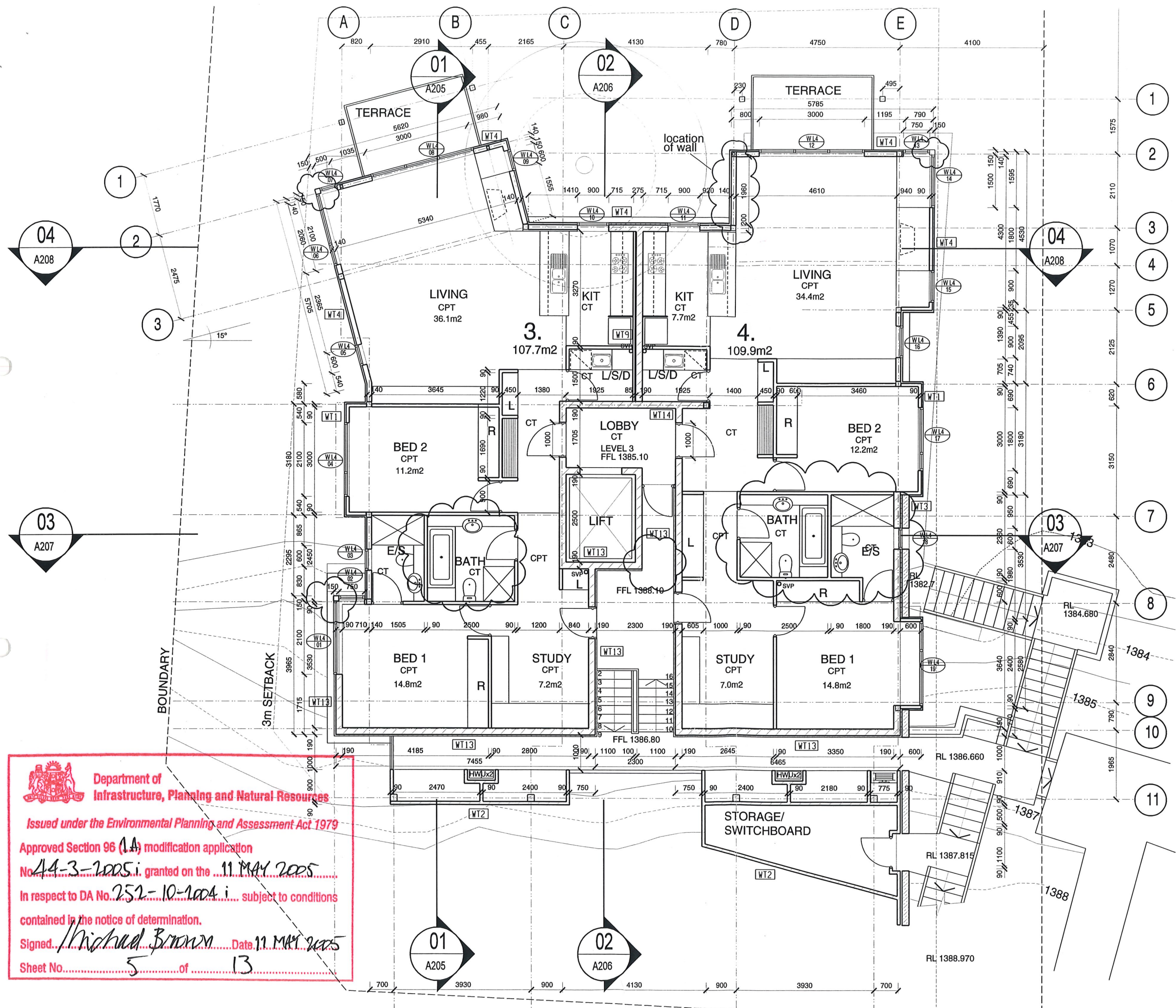
**LIETELINNA**  
LOT 55 THREDBO

Scale @ A3 Date  
1:100 05.07.2004

Description

**LEVEL 4 PLAN**

Job Number Dwg. No. Revision  
03 460 A1.04 F



**Department of Infrastructure, Planning and Natural Resources**

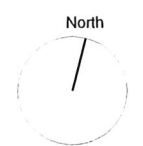
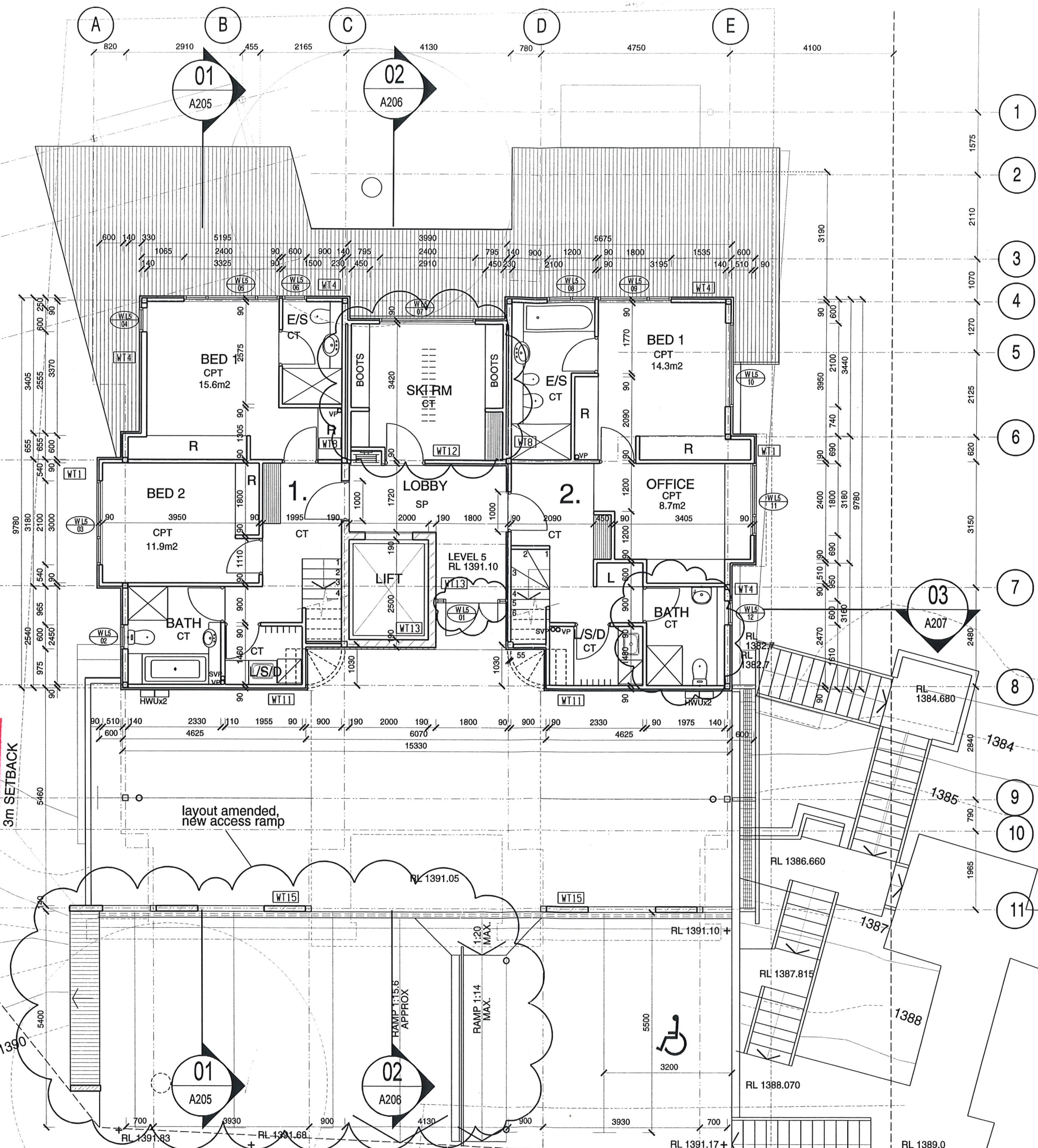
Issued under the Environmental Planning and Assessment Act 1979

Approved Section 96 (1A) modification application  
No. 44-3-2005 i. granted on the 11 MAY 2005  
In respect to DA No. 252-10-2004 i. subject to conditions contained in the notice of determination.

Signed: *Michael Brown* Date: 11 MAY 2005  
Sheet No. 5 of 13



Department of Infrastructure, Planning and Natural Resources  
 Issued under the Environmental Planning and Assessment Act 1979  
 Approved Section 96 (1A) modification application  
 No. 44-3-2005-11 granted on the 11 MAY 2005  
 In respect to DA No. 752-10-2004-1 subject to conditions contained in the notice of determination.  
 Signed: *Michael Brown* Date: 11 MAY 2005  
 Sheet No. 6 of 13



- LEGEND**
- AR - ACRYLIC RENDER COATING ON STYRENE
  - CFC - COMPOSITE FIBROUS CEMENT SHEET
  - CNC - CONCRETE - BRUSHED FINISH
  - CPT - CARPET
  - CT - CERAMIC TILE
  - CUP - COLOURED CONCRETE UNIT PAVER
  - FW - FLOOR WASTE
  - HMC - HORIZONTAL METAL CLADDING
  - HWU - HOT WATER UNIT
  - MR - METAL ROOFING - CORRUGATED COLORBOND
  - PP - PAINTED FIBROUS CEMENT PANEL
  - PT - TEXTURED PAINT FINISH TO CFC SHEET
  - R - ROBE
  - RSW - RANDOM STONE WALLING
  - RM - RENDERED MASONRY
  - SP - STONE PAVERS
  - TB - TIMBER BOARDING
  - TFW - TIMBER FRAMED WINDOW
  - TS - TIMBER SCREEN
  - ZC - ZINC CLADDING

Issue	Status	Date
F	SECTION 96	02.03.05
E	CO-ORDINATION	31.01.05
D	ISSUE FOR COSTING	24.11.04
C	CO-ORDINATION	17.11.04
B	CO-ORDINATION	26.10.04
A	DA Submission	08.10.04

Consultants

Client:  
ALPINE DEVELOPMENTS

**DARYL JACKSON ROBIN DYKE PTY LTD**  
 64 Rose Street  
 Chippendale NSW 2008  
 Telephone (02) 9319 2955  
 Facsimile (02) 9698 1116  
 Email project@tdjr.com.au

Architects

**LIETELINNA**  
 LOT 55 THREDBO

Scale @ A3 Date  
 1: 100 05.07.2004

Description

**LEVEL 5 PLAN**

Job Number Dwg. No. Revision  
 03 460 A1.05 F





Department of  
Infrastructure, Planning and Natural Resources

Issued under the Environmental Planning and Assessment Act 1979

Approved Section 96 (A) modification application

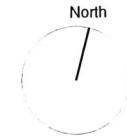
No. AA-3-2005 granted on the 11 MAY 2005

In respect to DA No. 257-10-2005, sub-BOUNDARY

contained in the notice of determination.

Signed Michael Brown Data 11 MAY 2005

Sheet No. of 13



LEGEND

- AR - ACRYLIC RENDER COATING ON STYRENE
- CFC - COMPOSITE FIBROUS CEMENT SHEET
- CNC - CONCRETE - BRUSHED FINISH
- CPT - CARPET
- CT - CERAMIC TILE
- CUP - COLOURED CONCRETE UNIT PAVER
- FW - FLOOR WASTE
- HMC - HORIZONTAL METAL CLADDING
- HWU - HOT WATER UNIT
- MR - METAL ROOFING - CORRUGATED COLORBOND
- PP - PAINTED FIBROUS CEMENT PANEL
- PT - TEXTURED PAINT FINISH TO CFC SHEET
- R - ROBE
- RSW - RANDOM STONE WALLING
- RM - RENDERED MASONRY
- SP - STONE PAVERS
- TB - TIMBER BOARDING
- TFW - TIMBER FRAMED WINDOW
- TS - TIMBER SCREEN
- ZC - ZINC CLADDING

Issue	Status	Date
F	SECTION 96	02.03.05
	kitchens relocated	
E	CO-ORDINATION	31.01.05
D	ISSUE FOR COSTING	24.11.04
C	CO-ORDINATION	17.11.04
B	CO-ORDINATION	26.10.04
A	DA Submission	08.10.04

Consultants

Client:  
ALPINE DEVELOPMENTS

DARYL JACKSON ROBIN DYKE PTY LTD

64 Rose Street  
Chippendale NSW 2008  
Telephone (02) 9319 2955  
Facsimile (02) 9698 1116  
Email project@djr.com.au

Architects

PROJECT

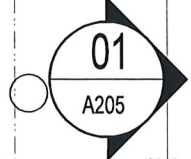
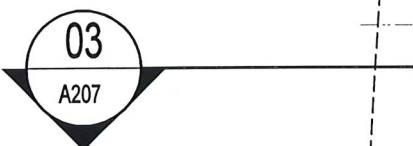
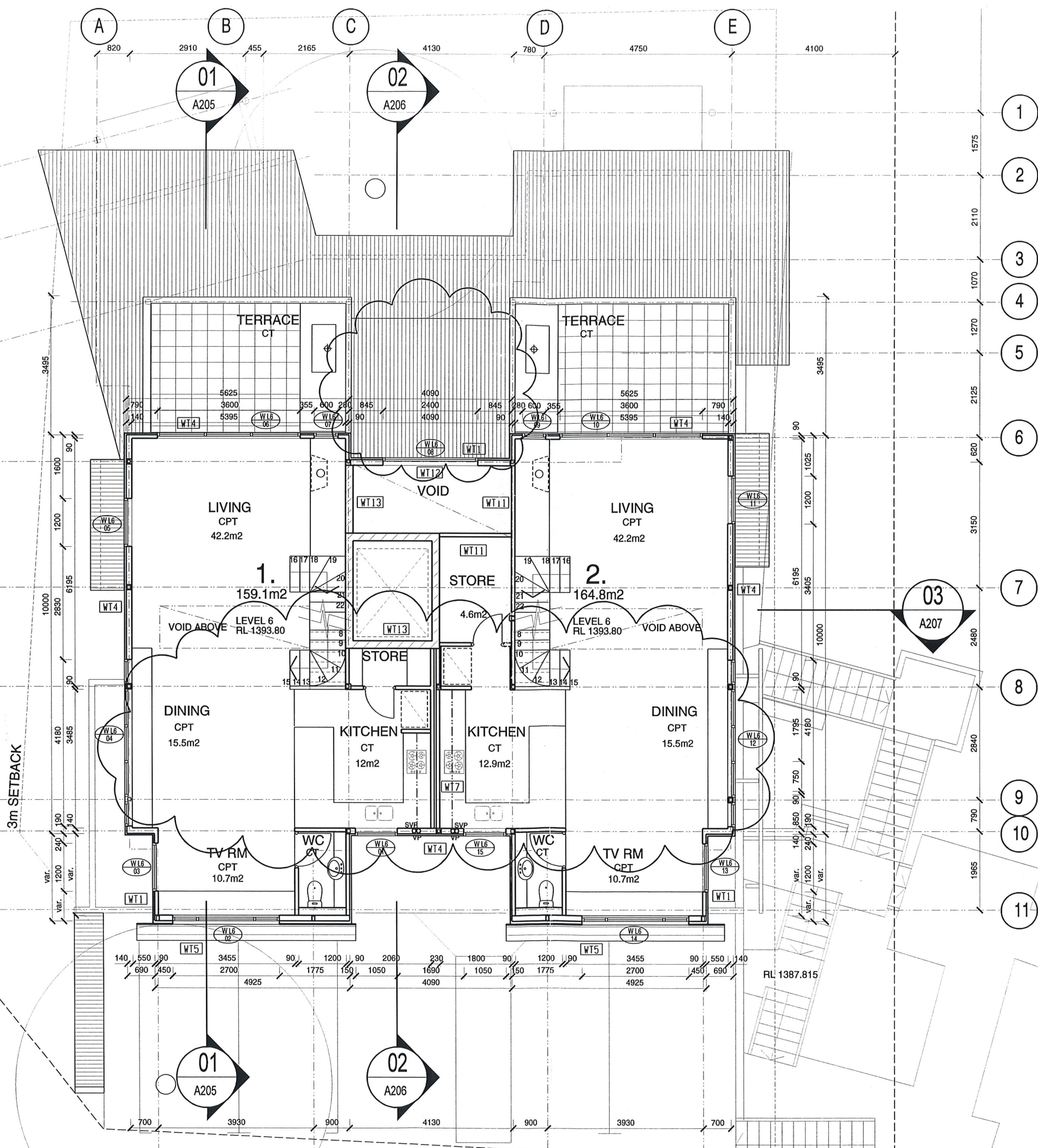
LIETELINNA  
LOT 55 THREDBO

Scale @ A3 Date  
1: 100 05.07.2004

Description

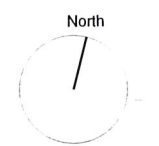
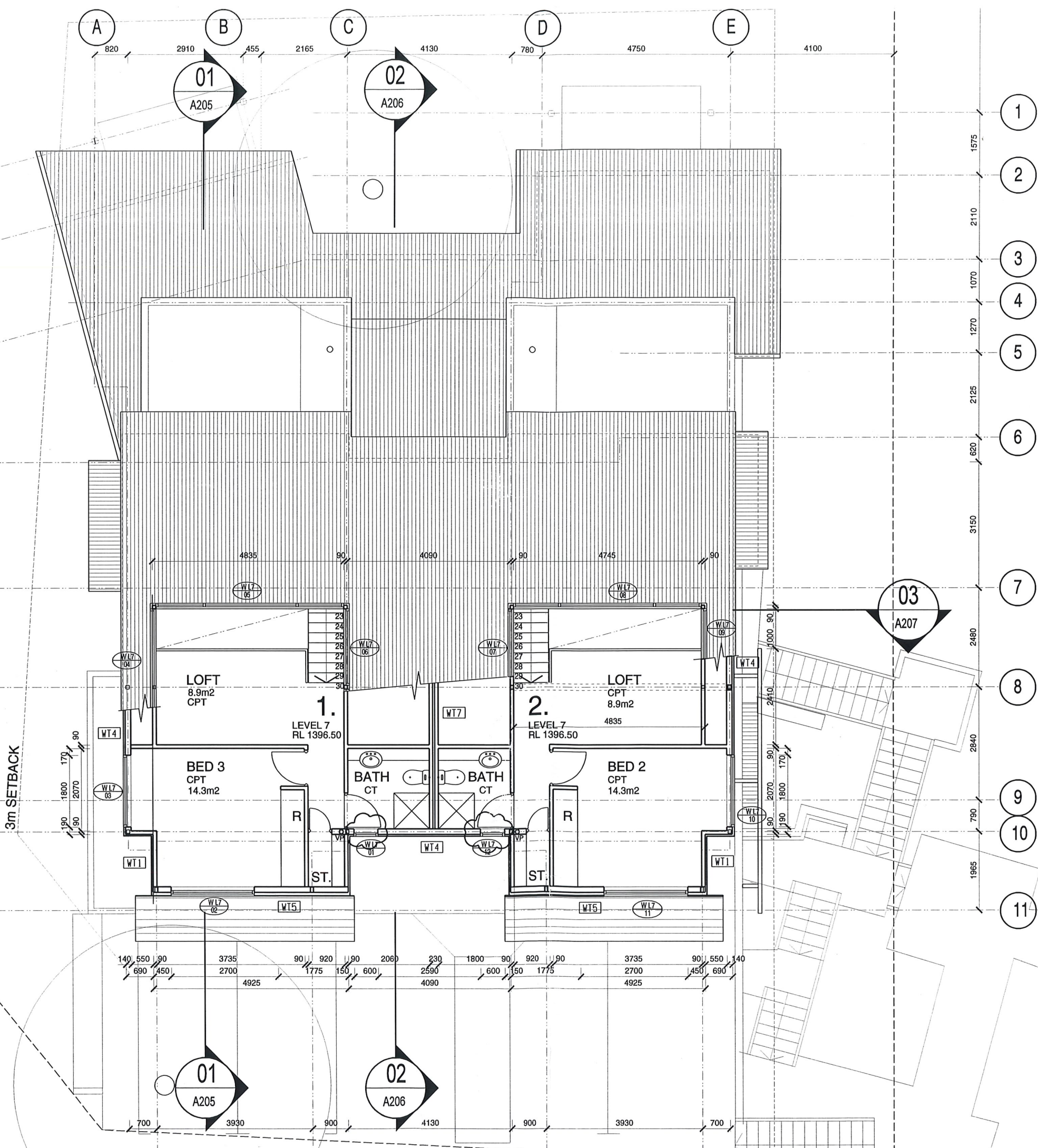
LEVEL 6 PLAN

Job Number Dwg. No. Revision  
03 460 A1.06 F





Department of Infrastructure, Planning and Natural Resources  
 Issued under the Environmental Planning and Assessment Act 1979  
 Approved Section 96 (1A) modification application  
 No AA-3-2005 granted on the 11 MAY 2005  
 In respect to DA No. 152-1P-2004 i. sub-boundary conditions  
 contained in the notice of determination.  
 Signed: Michael Brown Date: 11 MAY 2005  
 Sheet No. 13



- LEGEND**
- AR - ACRYLIC RENDER COATING ON STYRENE
  - CFC - COMPOSITE FIBROUS CEMENT SHEET
  - CNC - CONCRETE - BRUSHED FINISH
  - CPT - CARPET
  - CT - CERAMIC TILE
  - CUP - COLOURED CONCRETE UNIT PAVER
  - FW - FLOOR WASTE
  - HMC - HORIZONTAL METAL CLADDING
  - HWU - HOT WATER UNIT
  - MR - METAL ROOFING - CORRUGATED COLORBOND
  - PP - PAINTED FIBROUS CEMENT PANEL
  - PT - TEXTURED PAINT FINISH TO CFC SHEET
  - R - ROBE
  - RSW - RANDOM STONE WALLING
  - RM - RENDERED MASONRY
  - SP - STONE PAVERS
  - TB - TIMBER BOARDING
  - TFW - TIMBER FRAMED WINDOW
  - TS - TIMBER SCREEN
  - ZC - ZINC CLADDING

Issue	Status	Date
F	SECTION 96	02.03.05
E	CO-ORDINATION	31.01.05
D	ISSUE FOR COSTING	24.11.04
C	CO-ORDINATION	17.11.04
B	CO-ORDINATION	26.10.04
A	DA Submission	08.10.04

Consultants

Client:  
 ALPINE DEVELOPMENTS

**DARYL JACKSON ROBIN DYKE PTY LTD**  
 64 Rose Street  
 Chippendale NSW 2008  
 Telephone (02) 9319 2955  
 Facsimile (02) 9698 1116  
 Email project@djrd.com.au  
 Architects

PROJECT

**LIETELINNA**  
 LOT 55 THREDBO

Scale @ A3 Date  
 1: 100 05.07.2004

Description  
**LEVEL 7 PLAN**

Job Number Dwg. No. Revision  
 03 460 A1.07 F



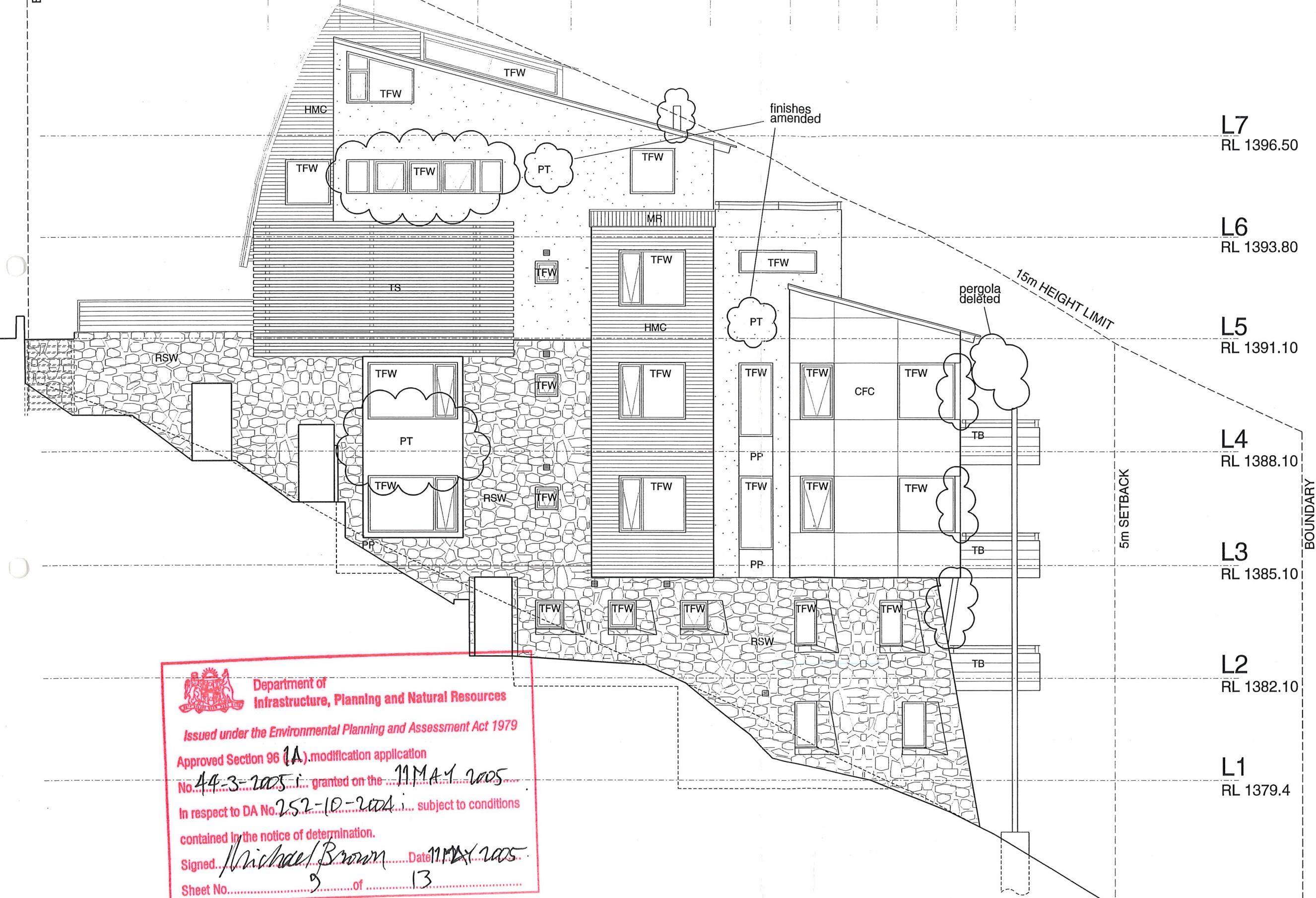
BOUNDARY

11 10 9 8 7 6 5 4 3 2 1



LEGEND

- AR - ACRYLIC RENDER COATING ON STYRENE
- CFC - COMPOSITE FIBROUS CEMENT SHEET
- CNC - CONCRETE - BRUSHED FINISH
- CPT - CARPET
- CT - CERAMIC TILE
- CUP - COLOURED CONCRETE UNIT PAVER
- FW - FLOOR WASTE
- HMC - HORIZONTAL METAL CLADDING
- HWU - HOT WATER UNIT
- MR - METAL ROOFING - CORRUGATED COLORBOND
- PP - PAINTED FIBROUS CEMENT PANEL
- PT - TEXTURED PAINT FINISH TO CFC SHEET
- R - ROBE
- RSW - RANDOM STONE WALLING
- RM - RENDERED MASONRY
- SP - STONE PAVERS
- TB - TIMBER BOARDING
- TFW - TIMBER FRAMED WINDOW
- TS - TIMBER SCREEN
- ZC - ZINC CLADDING



L7  
RL 1396.50

L6  
RL 1393.80

L5  
RL 1391.10

L4  
RL 1388.10

L3  
RL 1385.10

L2  
RL 1382.10

L1  
RL 1379.4

5m SETBACK

15m HEIGHT LIMIT

Issue	Status	Date
E	SECTION 96	02.03.05
D	CO-ORDINATION	31.01.05
C	ISSUE FOR COSTING	24.11.04
B	CO-ORDINATION	26.10.04
A	DA Submission	08.10.04

Consultants

Client:  
ALPINE DEVELOPMENTS

DARYL JACKSON ROBIN DYKE PTY LTD  
 64 Rose Street  
 Chippendale NSW 2008  
 Telephone (02) 9319 2955  
 Facsimile (02) 9698 1116  
 Email project@djrd.com.au  
 Architects

PROJECT  
**LIETELINNA**  
LOT 55 THREDBO

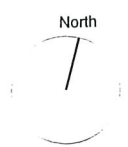
Scale @ A3 Date  
1: 100 07.07.2004

Description  
**EAST ELEVATION**

Job Number Dwg. No. Revision  
03 460 A2.01 E

Department of Infrastructure, Planning and Natural Resources  
 Issued under the Environmental Planning and Assessment Act 1979  
 Approved Section 96 (1A) modification application  
 No. 44-3-2005 granted on the 11 MAY 2005  
 In respect to DA No. 252-10-2004 subject to conditions contained in the notice of determination.  
 Signed Michael Brown Date 11 MAY 2005  
 Sheet No. 9 of 13





- LEGEND**
- AR - ACRYLIC RENDER COATING ON STYRENE
  - CFC - COMPOSITE FIBROUS CEMENT SHEET
  - CNC - CONCRETE - BRUSHED FINISH
  - CPT - CARPET
  - CT - CERAMIC TILE
  - CUP - COLOURED CONCRETE UNIT PAVER
  - FW - FLOOR WASTE
  - HMC - HORIZONTAL METAL CLADDING
  - HWU - HOT WATER UNIT
  - MR - METAL ROOFING - CORRUGATED COLORBOND
  - PP - PAINTED FIBROUS CEMENT PANEL
  - PT - TEXTURED PAINT FINISH TO CFC SHEET
  - R - ROBE
  - RSW - RANDOM STONE WALLING
  - RM - RENDERED MASONRY
  - SP - STONE PAVERS
  - TB - TIMBER BOARDING
  - TFW - TIMBER FRAMED WINDOW
  - TS - TIMBER SCREEN
  - ZC - ZINC CLADDING

- L7  
RL 1396.50
- L6  
RL 1393.80
- L5  
RL 1391.10
- L4  
RL 1388.10
- L3  
RL 1385.10
- L2  
RL 1382.10
- L1  
RL 1379.10

Department of Infrastructure, Planning and Natural Resources  
 Issued under the Environmental Planning and Assessment Act 1979  
 Approved Section 96 (A) modification application  
 No. 44-3-2005 granted on the 11 MAY 2005  
 In respect to DA No. 252-10-2004 subject to conditions contained in the notice of determination.  
 Signed: Michael Brown Date: 11 MAY 2005  
 Sheet No. 10 of 13



Issue	Status	Date
E	SECTION 96	02.03.05
D	CO-ORDINATION	31.01.05
C	ISSUE FOR COSTING	24.11.04
B	CO-ORDINATION	26.10.04
A	DA Submission	08.10.04

Consultants

Client:  
ALPINE DEVELOPMENTS

  
 DARYL JACKSON ROBIN DYKE PTY LTD  
 64 Rose Street  
 Chippendale NSW 2008  
 Telephone (02) 9319 2955  
 Facsimile (02) 9698 1116  
 Email project@djrd.com.au  
 Architects

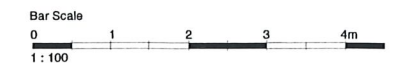
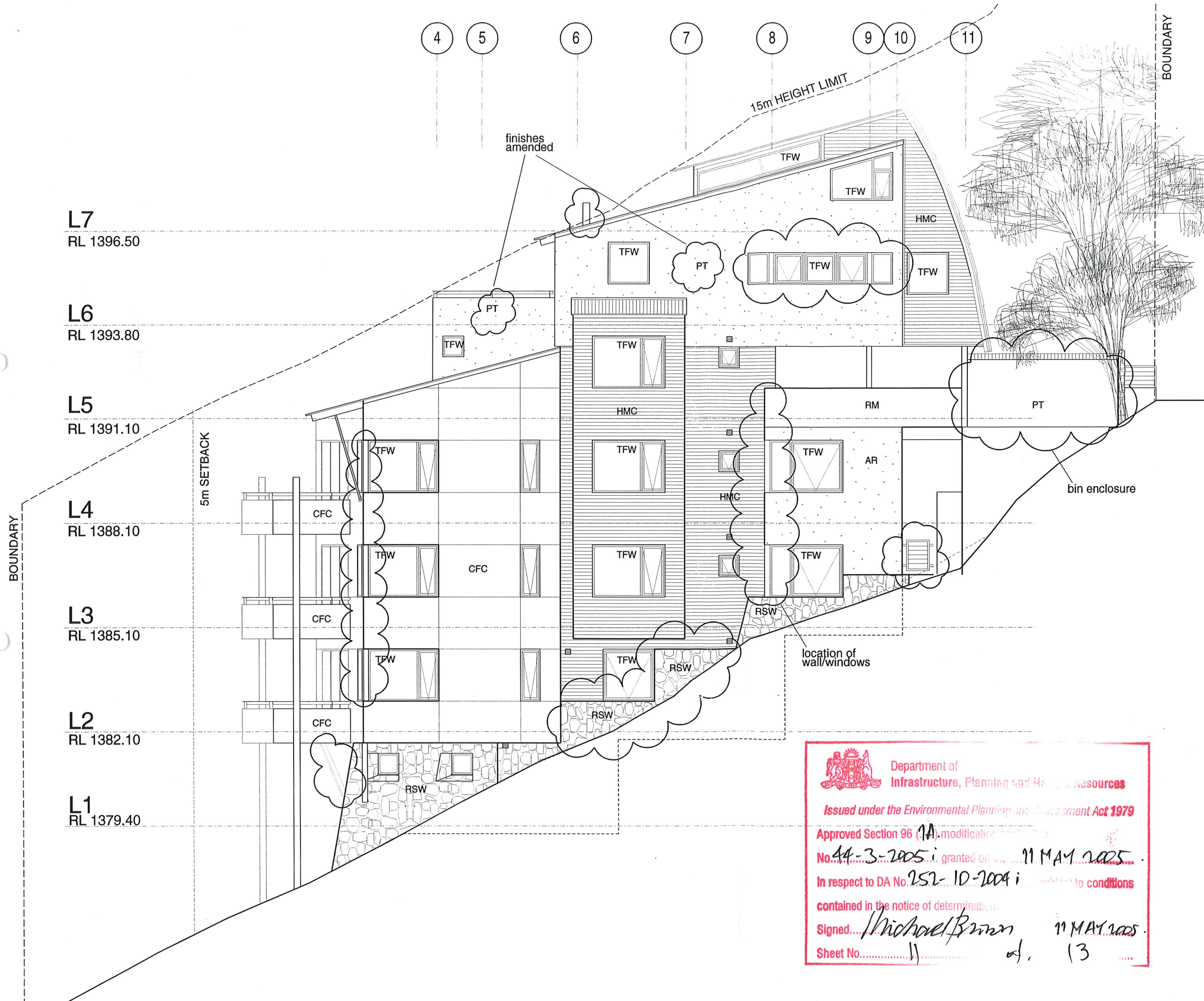
PROJECT  
**LIETELINNA**  
LOT 55 THREDBO

Scale @ A3 Date  
1: 100 07.07.2004

Description  
**NORTH ELEVATION**

Job Number Dwg. No. Revision  
03 460 A2.02 E





- LEGEND**
- AR - ACRYLIC RENDER COATING ON STYRENE CEMENT SHEET
  - CFC - COMPOSITE FIBROUS CEMENT SHEET
  - CNC - CONCRETE - BRUSHED FINISH
  - CPT - CARPET
  - CT - CERAMIC TILE
  - CUP - COLOURED CONCRETE UNIT PAVER
  - FW - FLOOR WASTE
  - HMC - HORIZONTAL METAL CLADDING
  - HWU - HOT WATER UNIT
  - MR - METAL ROOFING - CORRUGATED COLORBOND
  - PP - PAINTED FIBROUS CEMENT PANEL
  - PT - TEXTURED PAINT FINISH TO CFC SHEET
  - R - ROBE
  - RSW - RANDOM STONE WALLING
  - RM - RENDERED MASONRY
  - SP - STONE PAVERS
  - TB - TIMBER BOARDING
  - TFW - TIMBER FRAMED WINDOW
  - TS - TIMBER SCREEN
  - ZC - ZINC CLADDING

Issue	Status	Date
E	SECTION 96	02.03.05
D	CO-ORDINATION	31.01.05
C	ISSUE FOR COSTING	24.11.04
B	CO-ORDINATION	26.10.04
A	DA Submission	08.10.04

Consultants

Client:  
ALPINE DEVELOPMENTS

**DARYL JACKSON ROBIN DYKE PTY LTD**  
 64 Rose Street  
 Chippendale NSW 2008  
 Telephone (02) 9319 2955  
 Facsimile (02) 9698 1116  
 Email project@djrd.com.au  
 Architects

PROJECT

**LIETELINNA**  
 LOT 55 THREDBO

Scale @ A3 Date  
 1: 100 07.07.2004

Description

**WEST ELEVATION**

Job Number Dwg. No. Revision  
 03 460 A2.03 E

**Department of Infrastructure, Planning and Natural Resources**

*Issued under the Environmental Planning and Assessment Act 1979*

Approved Section 96 (1A) modification

No. 44-3-2005 granted on the 11 MAY 2005

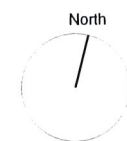
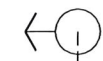
In respect to DA No. 252-10-2004 subject to conditions

contained in the notice of determination.

Signed Michael Brown 11 MAY 2005

Sheet No. 11 of 13





15m HEIGHT LIMIT

BOUNDARY VARIES

3m SETBACK

BOUNDARY

A C D E

window sizes/finish

bin enclosure

DEMOLISH EXTG RC WALL (SHOWN DOTTED)

L7 RL 1396.50  
L6 RL 1393.80  
L5 RL 1391.10

BOBUCK LANE

- LEGEND
- AR - ACRYLIC RENDER COATING ON STYRENE CEMENT SHEET
  - CFC - COMPOSITE FIBROUS CEMENT SHEET
  - CNC - CONCRETE - BRUSHED FINISH
  - CPT - CARPET
  - CT - CERAMIC TILE
  - CUP - COLOURED CONCRETE UNIT PAVER
  - FW - FLOOR WASTE
  - HMC - HORIZONTAL METAL CLADDING
  - HWU - HOT WATER UNIT
  - MR - METAL ROOFING - CORRUGATED COLORBOND
  - PP - PAINTED FIBROUS CEMENT PANEL
  - PT - TEXTURED PAINT FINISH TO CFC SHEET
  - R - ROBE
  - RSW - RANDOM STONE WALLING
  - RM - RENDERED MASONRY
  - SP - STONE PAVERS
  - TB - TIMBER BOARDING
  - TFW - TIMBER FRAMED WINDOW
  - TS - TIMBER SCREEN
  - ZC - ZINC CLADDING

Issue	Status	Date
E	SECTION 96	02.03.05
D	CO-ORDINATION	31.01.05
C	ISSUE FOR COSTING	24.11.04
B	CO-ORDINATION	26.10.04
A	DA Submission	08.10.04

Consultants

Client: ALPINE DEVELOPMENTS

DARYL JACKSON ROBIN DYKE PTY LTD  
 64 Rose Street  
 Chippendale NSW 2008  
 Telephone (02) 9319 2955  
 Facsimile (02) 9698 1116  
 Email project@djrd.com.au  
 Architects

PROJECT

LIETELINNA  
LOT 55 THREDBO

Scale @ A3 1: 100 Date 07.07.2004

Description SOUTH ELEVATION

Job Number 03 460 Dwg. No. A2.04 Revision E

Department of Infrastructure, Planning and Natural Resources

Issued under the Environmental Planning and Assessment Act 1979

Approved Section 96 (1A) modification application

No. 44-3-2005 i granted on the 11 MAY 2005

In respect to DA No. 252-10-2004 i subject to conditions contained in the notice of determination.

Signed Michael Brown Date 11 MAY 2005

Sheet No. 12 of 13





Department of Infrastructure, Planning and Natural Resources

Issued under the Environmental Planning and Assessment Act 1979

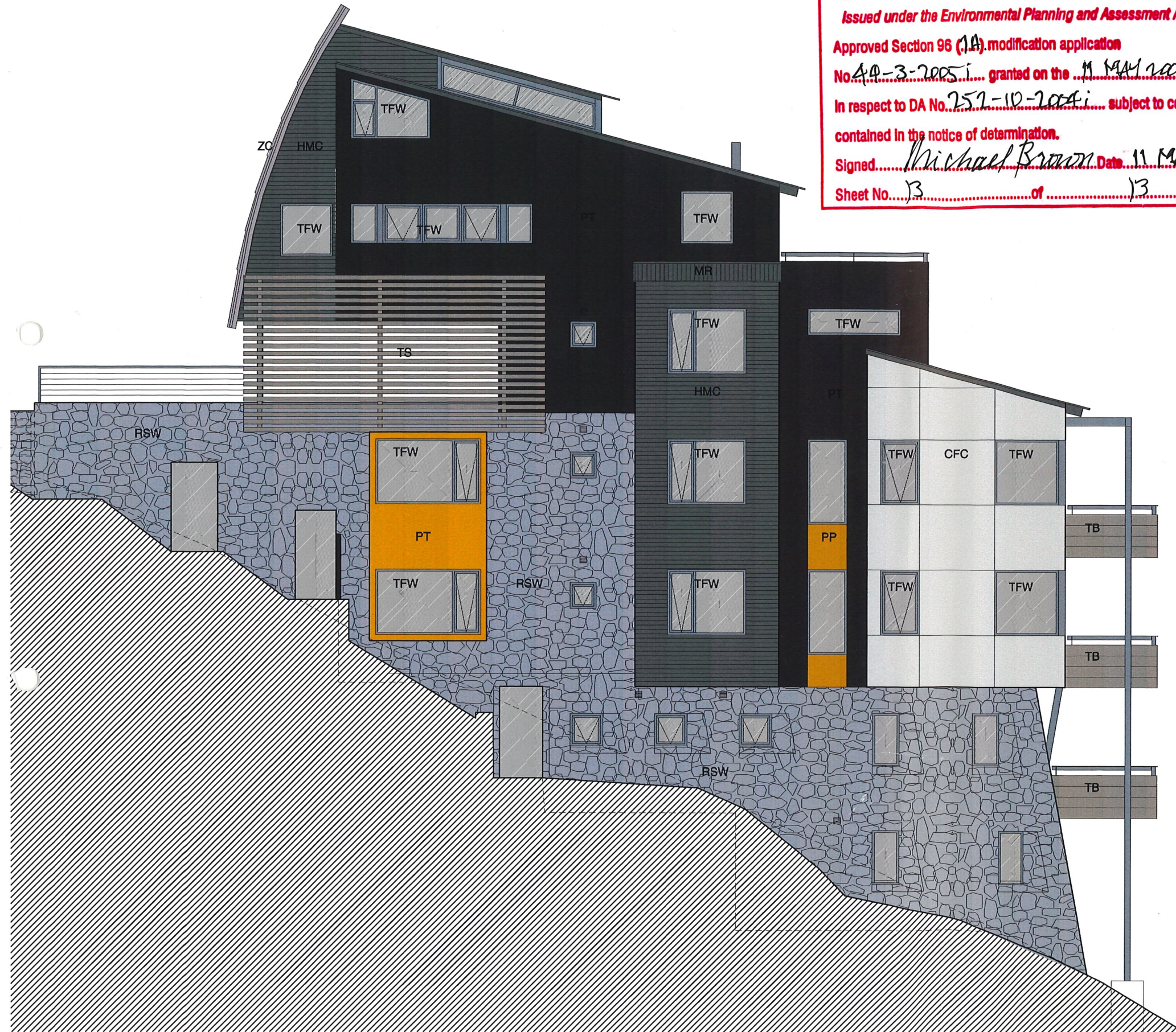
Approved Section 96 (1A) modification application

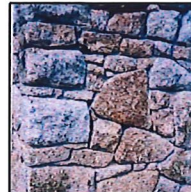
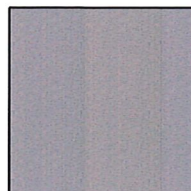
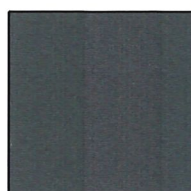
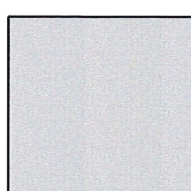
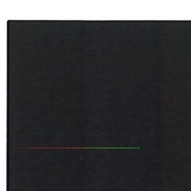
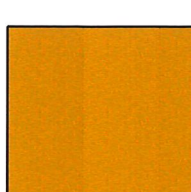

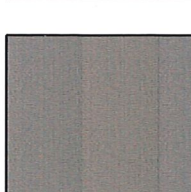

No. 44-3-2005 granted on the 11 MAY 2005

In respect to DA No. 252-10-2004 subject to conditions contained in the notice of determination.

Signed Michael Brown Date 11 MAY 2005

Sheet No. 13 of 13




-  RSW  
RANDOM STONE WALLING
-  ZC  
ZINC CLADDING
-  CURVED ROOF
-  HMC / MR  
CORRUGATED COLORBOND 'WOODLAND GREY'
-  ROOFS / WALLS (HORIZONTAL)
-  CFC  
FIBRE CEMENT
-  WALLS / BALCONIES
-  AR  
DULUX DOMINO PG1.A8  
ACRYLIC RENDER
-  DULUX KAOLIN P12.E8  
ACRYLIC RENDER
-  DULUX OLDE PEWTER (P/C 50243)  
WINDOW FRAMES AND STEELWORK
-  TS / TB  
TIMBER
-  TIMBER SCREEN / BALCONIES

Issue	Status	Date
C	SECTION 96	02.03.05
B	ISSUE FOR COSTING	24.11.04
A	DA Submission	08.10.04

Consultants

Client:  
ALPINE DEVELOPMENTS

 DARYL JACKSON ROBIN DYKE PTY LTD  
64 Rose Street  
Chippendale NSW 2008  
Telephone (02) 9319 2955  
Facsimile (02) 9698 1116  
Email project@djrd.com.au  
Architects

PROJECT

**LIETELINNA**  
LOT 55 THREDBO

Scale @ A3 Date  
1: 100 01.10.2004

COLOUR SCHEDULE

Job Number	Dwg. No.	Revision
03 460	A7.01	C